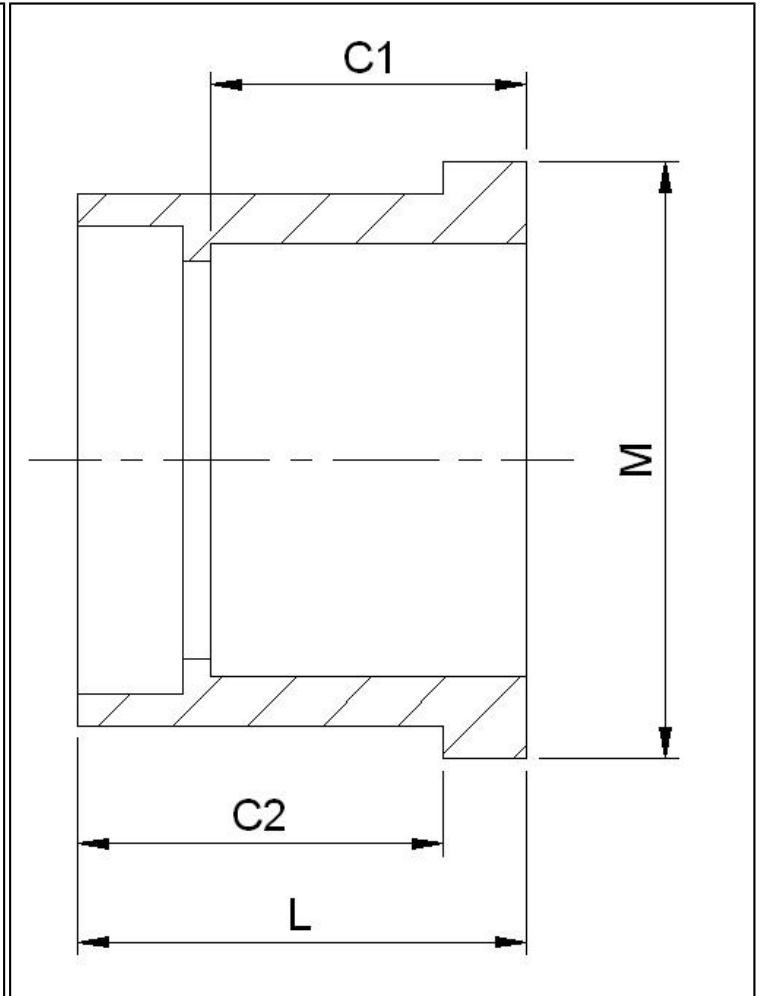


**Bucha de Redução CPVC**



DN (pol)	Código	L	C1	C2	M	Peso Aprox. (kg)
DN (inch)	Code	L	C1	C2	M	Weight Approx. (Kg)
3/8"X1/4"	9837052	25.0	16.0	19.0	22.0	0.01
1/2"X1/4"	9837072	28.0	17.0	22.0	28.0	0.01
1/2"X3/8"	9837073	28.0	20.0	22.0	27.0	0.01
3/4" X 1/2"	9837101	35.1	23.2	25.8	31.8	0.02
1" X 1/2"	9837130	38.0	22.9	28.5	41.5	0.03
1" X 3/4"	9837131	38.2	26.4	38.8	41.5	0.03
1.1/4" X 1/2"	9837166	41.5	23.1	32.0	52.7	0.05
1.1/4" X 3/4"	9837167	41.2	25.8	31.8	52.7	0.04
1.1/4" X 1"	9837168	42.7	25.3	33.1	52.4	0.04
1.1/2" X 1/2"	9837209	44.5	23.0	35.1	57.3	0.09
1.1/2" X 3/4"	9837210	44.5	25.9	35.1	57.3	0.08
1.1/2" X 1"	9837211	44.5	29.3	35.1	57.4	0.06
1.1/2" X 1.1/4"	9837212	44.7	32.8	35.1	57.5	0.04
2" X 1/2"	9837247	47.6	22.9	38.1	71.6	0.15
2" X 3/4"	9837248	47.4	29.0	38.1	71.6	0.14
2" X 1"	9837249	47.6	29.0	38.2	71.7	0.11
2" X 1.1/4"	9837250	48.1	32.5	28.5	72.7	0.09
2" X 1.1/2"	9837251	47.9	35.8	38.5	71.6	0.08

**Continua na próxima página**

**Continuação da tabela**

DN (pol)	Código	L	C1	C2	M	Peso Aprox. (kg)
2.1/2" X 1/2"	9837287	63.0	22.0	44.8	82.9	0.27
2.1/2" X 3/4"	9837288	63.0	29.0	44.8	82.9	0.26
2.1/2" X 1"	9837289	63.0	29.0	44.8	82.9	0.23
2.1/2" X 1.1/4"	9837290	63.0	32.8	44.8	82.9	0.20
2.1/2" X 1.1/2"	9837291	63.0	35.3	44.8	82.9	0.12
2.1/2" X 2"	9837292	54.1	38.3	44.7	82.9	0.12
3" X 1"	9837335	57.5	29.0	47.8	99.1	0.28
3" X 1.1/4"	9837336	57.5	32.8	47.8	99.1	0.28
3" X 1.1/2"	9837337	57.9	35.3	48.1	99.1	0.28
3" X 2"	9837338	47.8	38.2	17.8	99.1	0.28
3" X 2.1/2"	9837339	57.5	44.8	47.7	99.1	0.17
4" X 2"	9837420	67.3	39.1	57.9	124.7	0.52
4" X 2.1/2"	9837421	67.6	45.3	58.0	124.5	0.42
4" X 3"	9837422	67.5	47.8	58.1	124.4	0.49
6" X 3"	9837530	94.3	50.7	78.4	185.7	0.50
6" X 4"	9837532	94.3	58.7	53.5	185.7	1.59
8" X 6"	9837585	113.9	77.9	103.3	236.8	2.57
10" X 8"	9837628	161.8	115.4	145.8	273.2	4.26

**Obs.:** Todas medidas acima estão em milímetros (mm) , salvo indicação contrária.  
**As Buchas descritas acima poderão ser COMPOSTAS por duas ou mais Buchas**